

# PIFI Stereo Audio Expansion

## for the Raspberry-Pi™ and other USB host devices

### IES-PI-HIFI

#### Product Overview

The Designer Systems DS-PIFI is a HIFI (CD) quality stereo audio expansion board for the Raspberry-Pi platform.

Specifically targeted at the user who wishes to construct audio playback or record projects the PIFI features three audio outputs (headphone, SPDIF [digital] and 6+6Watt speakers) an on-board microphone and external microphone connection.

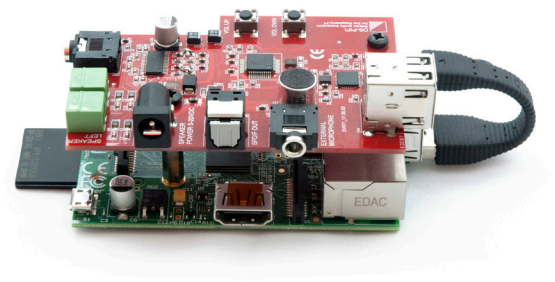
The three audio outputs allow headphones (or an external amplifier e.g. PC speakers), an external amplifier with a SPDIF digital input, stereo 6-15Watt speakers (external PSU required) or a combination of the above to be driven for maximum flexibility.

The on-board microphone, or externally connected electret microphone, allows audio monitoring or recording applications to be supported.

The PIFI also provides two USB2.0 ports for connection to other USB devices so no USB ports are lost.

The board is fully ALSA driver compatible and requires only minimal setup for high quality audio reproduction.

The supplied micro USB cable and stand-off pillars allow the PIFI to be securely mounted above the Raspberry-Pi board (Supports B+ fixings). A cutout around the GPIO port allows other peripherals to be connected without interference.



#### Applications :

The DS-PIFI has many applications in audio playback and recording e.g. streaming speakers, baby monitor, security monitor etc. The board fully supports any ALSA compatible software running on the Raspberry-Pi and can also be used on any Windows® or Linux based PC or tablet.

#### Features :

- Compatible with the Raspberry-Pi A, B & B+
- HIFI quality 44/48bit Stereo record and playback
- Flexible audio output connections ( headphones, SPDIF and on-board 6+6Watt speaker amplifier)
- Internal / external electret microphone audio recording
- Two port USB2.0 hub onboard so you actually gain a USB port
- Raspberry-Pi A, B & B+ form factor with GPIO pin clearance ( no GPIO pins used)
- Uses standard ALSA driver supplied with NOOBS
- Compatible with XiXMusicPlayer, qmmp, MusicBox and Shairport AirPlay speakers emulator to name a few
- Can also be used on standard Windows® or Linux based devices such as PC's and tablets
- LVD, RoHS and WEEE compliant product

## Products

IES PART NUMBER	Description
IES-PI-HIFI	PIFI Stereo Audio Expansion

Raspberry-Pi is a trademark

Note: A 12VDC [1A min] power supply with 2.1mm plug is required for speaker support

## WEEE Consumer Notice

This product is subject to Directive 2002/96/EC of the European Parliament and the Council of the European Union on Waste of Electrical and Electronic Equipment (WEEE) and, in jurisdictions adopting that Directive, is marked as being put on the market after August 13, 2005, and should not be disposed of as unsorted municipal/public waste. Please utilise your local WEEE collection facilities in the disposition and otherwise observe all applicable requirements. For further information on the requirements regarding the disposition of this product in other languages please visit [www.i-sbc.com](http://www.i-sbc.com)

## RoHS Compliance

This product complies with Directive 2002/95/EC of the European Parliament and the Council of the European Union on the Restriction of Hazardous Substances (RoHS) which prohibits the use of various heavy metals (lead, mercury, cadmium, and hexavalent chromium), polybrominated biphenyls (PBB) and polybrominated diphenyl ethers (PBDE).

## For further information please contact IES

The values contained in this data sheet can change due to technical innovations. Any such changes will be made without separate notification.